

THE NUKUHOU NEWS - T2 W5

Kia ora Parents and Whānau,

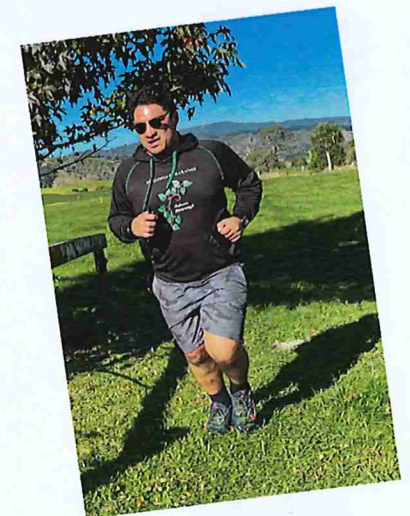
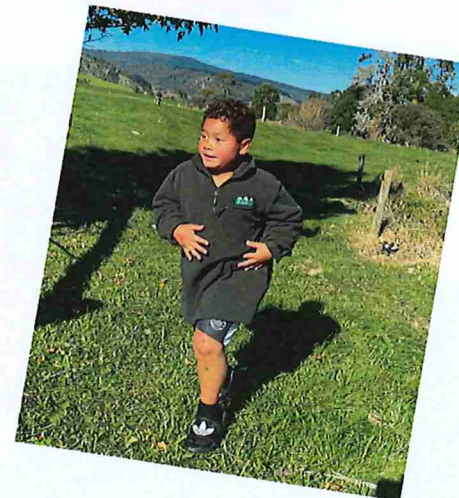
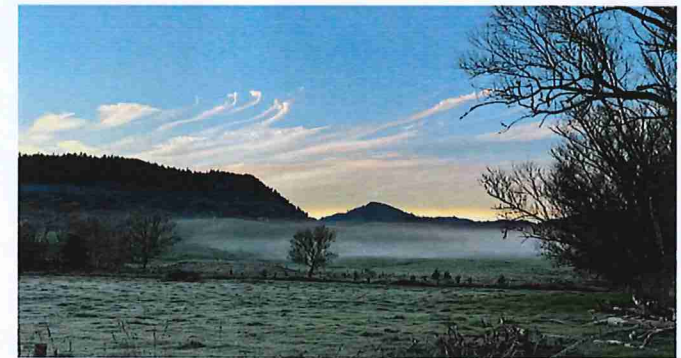
It was great to see so many tamariki out there doing their best at last weeks Cross Country. The positive attitudes of our students and their willingness to push themselves to complete the course was really pleasing. Regardless of whether they were walking or running, our kids were all really positive out on the course and step-by-step they just kept moving forward. A big thank you to all the parents and whānau who were there to support our kids and well done to the adults who also completed the run - you are great role models for our tamariki. A big thank you to Norman Craig who once again prepared the course for us and ensured our runners were all challenged and safe while running.

Following on from last Friday's school Cross Country, this week we had close to thirty students compete at the Ōpōtiki district Cross Country at Woodlands school. It was great to have so many runners test themselves at the next level, Woodlands is a challenging course and we are proud of all our runners. A huge congratulations to Zara Harley, Joe Harvey, Paetaahuna Biddle-Ratu, Eilidh Harley, Holly McGillivray, Jonty Putwain, Charlotte Anthony, Jiko Bryant, Lily Bindon and Lauren Craill who have all qualified to compete at the Eastern Bay of Plenty Cross Country in two weeks time. I know you will all represent our school with pride and you have the whole school behind you! Kia kaha!

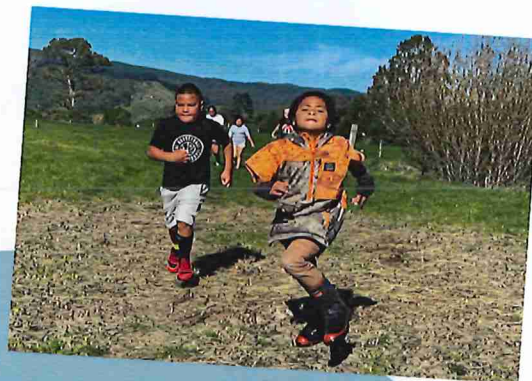
**A REMINDER THAT TOMORROW IS TEACHERS ONLY DAY
AND SCHOOL IS CLOSED. AS MONDAY IS QUEEN'S
BIRTHDAY, WE WILL SEE YOU ALL NEXT
TUESDAY 8TH JUNE. ENJOY YOUR LONG WEEKEND!**

Ngā mihi nui
Matua Josh Te Aomarere

CROSS COUNTRY



NEWS & NOTICES



TEACHER ONLY DAYS/PUBLIC HOLIDAYS

Please add the following days into your calendar as **school will be closed**

TOMORROW - Teacher Only Day

Monday 7th June - Queen's Birthday Holiday

Friday 2nd July - Teacher Only Day

WELCOME TO MATUA RAY HINTON

We are pleased to have Ray Hinton join our staff as our new kaiāwhina/teacher aide. Ray is well known to many of our students and school whānau. You'll often find Ray in our breakfast club first thing in the morning and he enjoys the opportunity to coach and support our school sports teams.

Ray will be working across all classes in our school and providing specific learning support where required.



KICKSTART BREAKFAST CLUB

We are pleased to have joined the Kickstart Breakfast program which enables us to now serve a healthy breakfast each morning. We are currently serving Weet-Bix and fruit to any student who wants to join us for brekky.

We are serving breakfast from 8am each morning.

'YES WE CAN' - CANNED FRUIT DONATIONS

We are now accepting donations of canned (and fresh) fruit to be used in our breakfast club. If you are able to donate, just drop a can into the collection bin in the entrance way of the school office. Thank you!

NEWSLETTER AVAILABLE VIA FACEBOOK AND EMAIL

If you would like our school newsletter emailed to you, please email Whaea Sally from your preferred email address and she will add you to our emailing list. Whaea Sally's email address is: office@nukuhou.school.nz

1647 State Highway 2

Waimana 3196

Ph: 07 312 3206 Text: 027 3755 904

Find us on Facebook